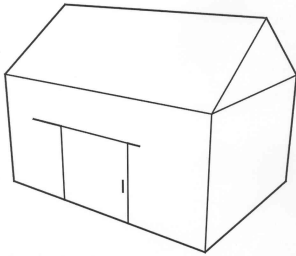


Vermont Barn Census

Visual Glossary

Barn Types

English Barn

**Look For:**

- Small; 30 x 40 is a common size
- Hinged or sliding door on eaves side
- Few windows

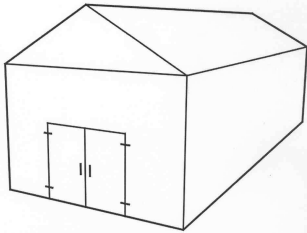
Description

Modest in size and scale, English barns adapted old-world agrarian traditions to the New England landscape. Provided space for threshing hay as well as tool storage and a few animal stalls.

Found?

- Statewide

Yankee Barn

**Look For:**

- Modest in scale
- Can be very long
- Hinged or sliding door on gable end
- Few windows

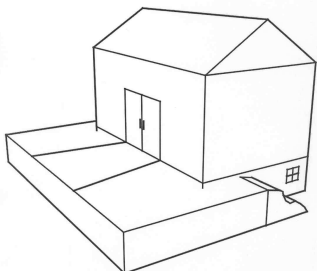
Description

Similar internal layout as the English barn, but with the entrance moved to the gable end. This made it easier to expand the barn by adding additional bays to the front or rear.

Found?

- Statewide

Early Bank Barn

**Look For:**

- Barn partially enveloped in a hill or bank
- Modest in scale
- Can have hinged or sliding doors
- Similar in appearance to English or Yankee Barns

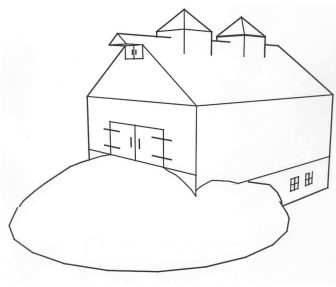
Description

An English or Yankee barn built in to the side of a hill to create a basement used to store manure.

Found?

- Statewide

Late Bank Barn



Look For:

- Large in scale
- Barn partially enveloped in a hill or bank
- Often feature ventilators, cupolas, or high drives

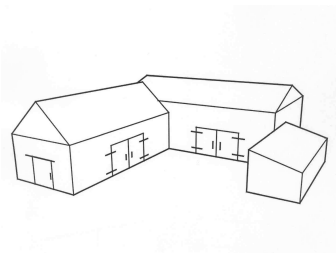
Description

Increases in agricultural technology led to larger herd sizes which required larger barns. Late bank barns were also built in to hillsides but were larger in scale than their predecessors.

Found?

- Statewide

Connected Barn



Look For:

- Connected group of barns and other farm buildings
- Sometimes joined to a farm house
- Irregular pattern
- Often surrounding a farm yard

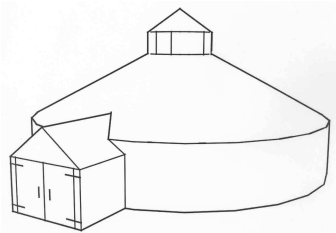
Description

A series of connected farm buildings, often including a farmhouse and a barn. The buildings are connected in an irregular pattern.

Found?

- Statewide
- Connected farmhouses found mainly in the Connecticut River Valley

Round/Polygonal Barn



Look For:

- Round or multi-sided
- Some have many windows
- Often topped by a cupola
- Can be up to four stories tall

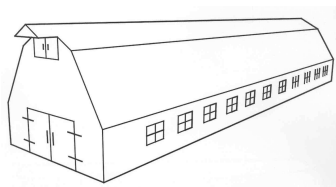
Description

Peak of efficient labor-saving designs for dairy barns of the late-18th and early-19th centuries. Can be small or large; usually topped by a cupola. Relatively rare.

Found?

- Rare, but examples can be found in all parts of the state

Ground Stable Barn



Look For:

- Long
- Usually one or two stories
- Gambrel or arched roofs
- Often with an attached milk house on the south side

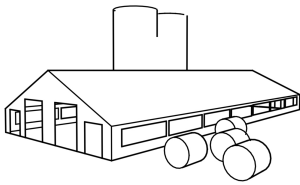
Description

Changes in government regulations and animal-handling practices led to a changeover to ground stable barns in the early 1900's. Animals kept in concrete-floored stalls on the ground floor. This eased cleaning and increased sanitation.

Found?

- Statewide

Pole Barn



Look For:

- Large roof
- Thin or otherwise minimal walls
- Usually one story
- Interior has a milking area and open access to a barn yard

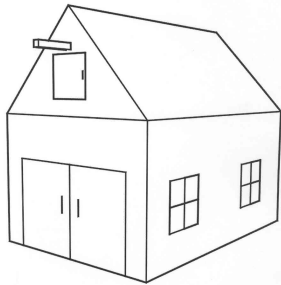
Description

With hay stored outside in plastic tubes and feed stored in silos, most ground stable barns built in the last 30 years have no hay loft and are known as pole barns. Many are free-stall barns and shelter large herds of cattle.

Found?

- Statewide

Carriage Barn/Horse Stable



Look For:

- Doors generally large; can be hinged or sliding
- Door sometimes replaced by large open bay
- Often with door to a hay loft
- Usually with windows

Description

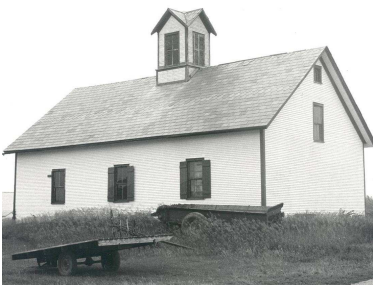
A building with space for horse stalls, carriages, harnesses, and hay. Can be small and house one carriage or large and house multiple. Occasionally feature a large open bay at front. Sometimes topped by a decorative cupola.

Found?

- Statewide

Other Agricultural Property Types

Apple Barn



Look For:

- Gable or gambrel roof
- One or two story
- Windows used for ventilation
- Often with rooftop cupola or ventilator
- Entrance usually on eaves side and wide enough for a wagon

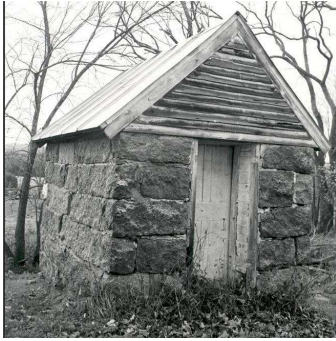
Description

Located in or near an orchard, apple barns are used to store apples before they are shipped to market. Windows, rooftop ventilators, and sometimes stoves help to discourage rot and to maintain the proper environment for the storage of fruit.

Found?

- Can be statewide, but concentrations exist in the Champlain Valley and the Champlain Islands

Ash House



Look For:

- Small
- Windowless
- Usually masonry
- Gable roof
- Small, elevated door

Description

Ash houses were used to collect ash which a byproduct of cooking, smoking of meats, and other farmstead chores. The ash was used to make soap, bleach and gunpowder. Although rare, ash houses can be found throughout Vermont.

Found?

- Statewide

Chicken Coop/Henhouse



Look For:

- Usually long and narrow
- Can be small and single story or large and multi-story
- Multiple windows
- Ventilation devices

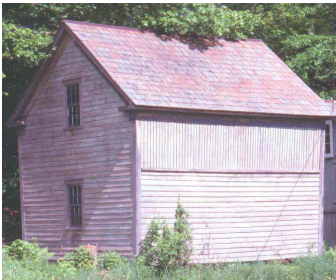
Description

Poultry was raised by farm families primarily for self-consumption through the late 1800's. In the early 20th century, poultry raising became more commercial and building size increased.

Found?

- Statewide

Corn Crib



Look For:

- Usually one or one and half stories
- Rest on posts
- Slatted walls
- Walls sometimes slant out toward the roof

Description

Distinctively shaped structure used for storing corn. Raised off the ground on posts and often with walls that slant outward toward the roof. The walls are slatted to allow air circulation. The posts and wall slant act as rodent deterrents.

Found?

- Statewide

Farm Shop



Look For:

- Small in scale
- Usually one or one and a half stories
- Entrance usually on gable end
- Doorway is easily accessible
- Windows all around
- Chimney

Description

Can be any combination of workshop, blacksmith shop, carpenter's shop, machine shop, tool shed, etc. Small and well lighted buildings holding workspace to make and repair farm equipment.

Found?

- Statewide

Fox Shed



Look For:

- Relatively simple structure
- Long and low
- Wood frame
- Single story
- Interior divided into a series of pens
- Outdoor runs give foxes access to exterior

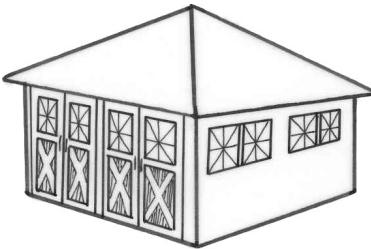
Description

Although never widely practiced in the state, fox farming took place mainly in the 1920's and 1930's as part of an effort to reclaim some of Vermont's unused farmland. Fox sheds are similar to mink sheds, but with the addition of outdoor runs.

Found?

- Statewide

Garage



Look For:

- Often unattached to other structures
- Usually one story
- Gable or hipped roof
- Sliding or hinged doors on early garages; roll-up doors after the 1950's

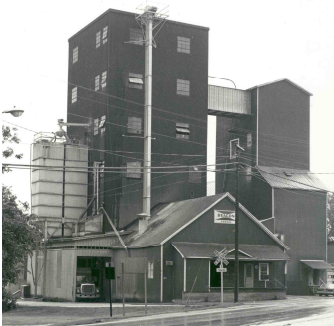
Description

When cars became popular in the early 20th century, many farmers built garages to hold their car or truck. Early examples had space for only one vehicle, while later examples were larger.

Found?

- Statewide

Grain Elevator



Look For:

- Tall
- Multi-story
- Tower-like
- Early elevators were framed and sided with wood
- Later elevators were mostly of sheet metal

Description

Grain elevators are facilities used to mix feed grain for commercial sale. Early elevators were built near railroad lines for ease of shipping. The name "elevator" comes from the way the grain is moved throughout the building.

Found?

- Statewide

Granary



Look For:

- Usually small; one or one and a half stories
- Wood frame or masonry
- Single, central entrance
- Walls ventilated with slats or other openings

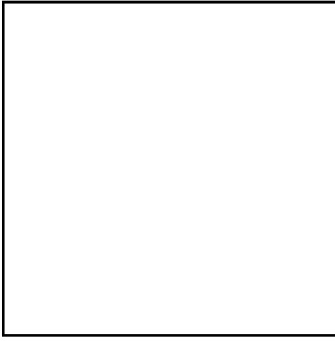
Description

Used for threshing grain and corn. Frequently built next to the main barn. Later examples were built in the late 1800s and were used to store oats for work horses. Granaries used slatted walls to allow air to circulate.

Found?

- Statewide

Greenhouse



Description

Glassed-in structures used for the cultivation of young plants. Not common until the 20th century. Reflected a growing interest in horticultural science.

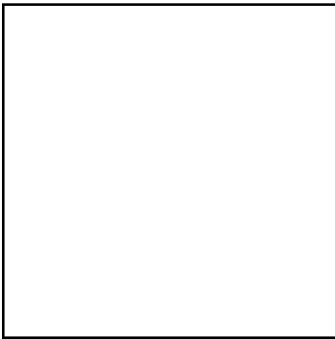
Look For:

- Low and long
- Usually gable-roofed
- Wood or metal frame
- Glass ceiling or walls

Found?

- Statewide

Hop House



Description

Used in producing beer, ale, and other malted beverages, hops were grown in Vermont in the mid-1800s. Hop houses were built to dry and bale hops. Occasionally hop houses were connected to dormitories for the hop pickers.

Look For:

- Existing examples are rare
- Long
- Single story
- Wood frame and siding
- Often have ventilators and chimneys

Found?

- Extremely rare. Existing example is in the Connecticut River Valley

Ice House



Description

Starting in the 1800's, icehouses were used for refrigeration purposes. Ice was "harvested" in January or February and stored in these small and heavily insulated buildings for the spring and summer.

Look For:

- Typically single story, single room
- No windows
- Usually gable-roofed
- Ventilator or ventilation slats

Found?

- Statewide

Milk House



Description

Used to house dairy processing operations, milk houses were small structures attached to or nearby a dairy barn. With the growth of the fluid milk industry in the 1920's, almost every dairy barn in the state had a milkhouse attached.

Look For:

- Small
- One room
- Single story
- Attached or near the main barn
- Usually located on side of barn closest to the main road for the easy loading of milk wagons

Found?

- Statewide

Mink Shed



Description

Although never widely practiced in the state, mink farming took place mainly in the 1920's and 1930's as part of an effort to reclaim some of Vermont's unused farmland. Mink fur is delicate and prone to singeing, so mink were not provided with access to outdoor runs as foxes were.

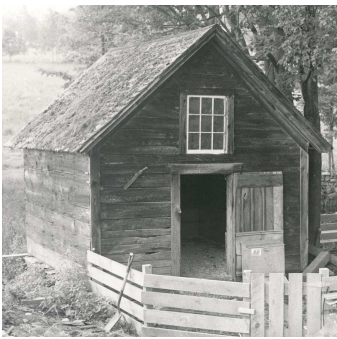
Look For:

- Relatively simple structure
- Long and low
- Wood frame
- Single story
- Interior divided into a series of pens

Found?

- Statewide

Piggery



Description

Small, functional structures providing room for pig pens and occasionally storage space. Pigs were once a common feature on Vermont farms. Not raised on the scale they once were, piggeries are no longer as widespread a sight.

Look For:

- Usually small in scale
- Little ornamentation
- Single story
- Often gable-roofed
- Side or rear entrances opening on to fenced-in areas
- Windows and roof ventilators

Found?

- Statewide

Potato Barn



Description

Although not as widespread as elsewhere in New England, potato farming did take place in Vermont in the 19th and 20th centuries. Potato barns were usually half-buried in a hillside or knoll to prevent freezing in the winter months.

Look For:

- May be partially buried in a hill or a bank
- Often with a gambrel roof extending low to the ground
- Roof ventilators

Found?

- Statewide

Root Cellar



Description

Subterranean chamber used for the long-term storage and preservation of roots for family food as well as a source of winter feed for sheep.

Look For:

- Rectangular chambers built in to a hillside or a bank
- Fieldstone walls (although sometimes brick)
- Earth mounded over top

Found?

- Statewide

Shed



Description

Small, usually unimproved and unadorned structure used for storing tools and farm implements.

Look For:

- Small; only enough room to hold tools
- Shed or gable roof
- Sometimes with a door, sometimes without

Found?

- Statewide

Sheep Barn



Description

Evidence of Vermont's importance in the wool industry, sheep barns were common throughout the state in the 1800's, but since then many have been converted for use in dairying or have been demolished.

Look For:

- Gable-roof bank barn
- Usually 2 stories
- Lower story: low ceiling and open bay connecting to a fenced pen
- Upper story: usually entered on side opposite pasture. Often double height

Found?

- Statewide

Silo



Description

Used to store animal feed, exterior silos were being built in VT by the 1890's. Early silos were square and wooden. Later, round wooden, concrete, and steel silos were used.

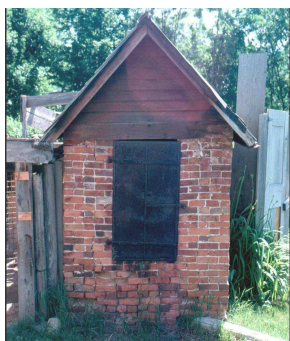
Look For:

- Tall and capped with a gable, hipped, or domed roof
- Square, polygonal, or round
- Can be wood, concrete, or metal

Found?

- Statewide

Smoke House



Description

Used to smoke meats as a way of preserving them for a year-round meat supply. Although rare, examples can be found throughout Vermont.

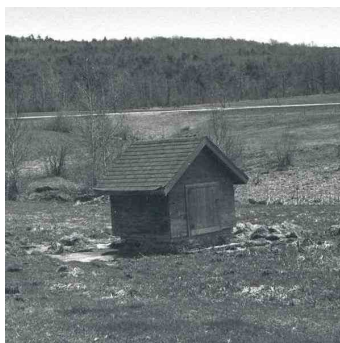
Look For:

- Small
- Windowless
- Usually masonry
- Gable roof
- Small, elevated door

Found?

- Statewide

Spring House



Look For:

- Small
- Usually windowless
- Only a few feet tall
- Not much wider than the spring being covered

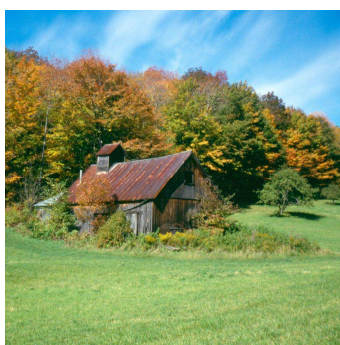
Description

Used in the 1800's and early 1900's, spring houses sheltered the spring which provided a farm's water source. They were small, rising only a few feet above the ground and only slightly larger than the spring they covered.

Found?

- Statewide

Sugar House



Look For:

- One or one and a half stories
- Gable-roofed
- Entrance often on gable end
- Usually have a metal roof
- Elongated wood roof ventilator

Description

Before the mid-1800's, sap was boiled in open air cauldrons. Later, sugar houses were built to hold large new metal evaporator pans. By the 1870's, sugar houses were a common site near maple sugar bushes and can still be seen in use today.

Found?

- Statewide

Tobacco Barn



Look For:

- Long
- Single story
- Wood frame
- Gable-roofed
- No windows
- Sliding doors at both ends
- Hinged, vertical ventilation slats along length of building

Description

Although not widespread in Vermont, some tobacco growing did take place in the late 1800's – mainly in the Connecticut River Valley. Raising tobacco required specialized barns with slatted walls to help create ideal conditions for drying the tobacco leaves.

Found?

- Connecticut River Valley

Wagon Shed



Look For:

- Single story
- Open bay
- Dirt floors
- Gable, shed, or flat-roofed

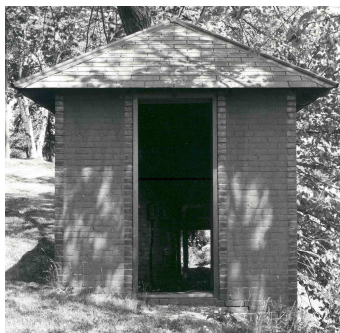
Description

Also known as cart houses, wagon sheds protect farm vehicles and equipment from the weather. Some wagon sheds also provide room for routine repair and maintenance.

Found?

- Statewide

Well House



Description

Used in the 1800's and early 1900's, well houses sheltered the well which provided a farm's water source. They were small, usually just large enough to cover the pumping mechanism.

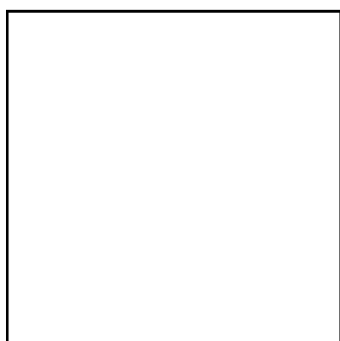
Look For:

- Small
- Often windowless
- Only as wide as the well being covered
- Only as tall as the pumping mechanism

Found?

- Statewide

Windmill



Description

Windmills provide power to pump water from a well to the farmhouse, barns, and other farm buildings where fresh water is required. Windmills can be attached to another building (like a well or pump house) or a separate structure.

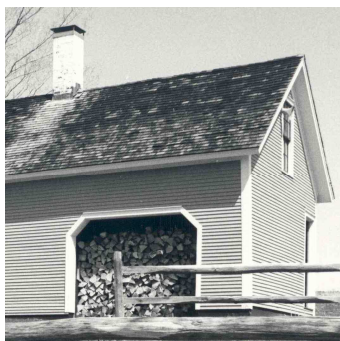
Look For:

- Early windmills featured an open wood frame topped by a wooden wheel
- Later windmills were of metal.

Found?

- Statewide

Wood Shed



Description

Woodsheds are used to store firewood for heating or cooking.

Look For:

- Sometimes attached to a farmhouse kitchen
- Can have doors or an open bay
- Gable, shed, or flat-roofed

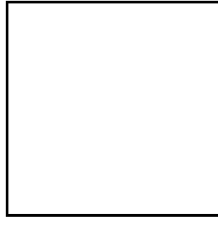
Found?

- Statewide

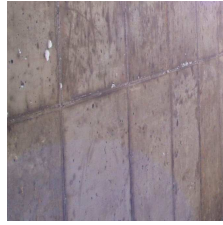
Foundation



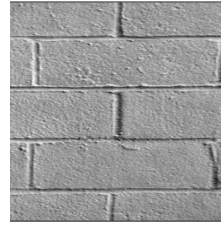
Stone



Brick



Concrete



Concrete Block

Framing



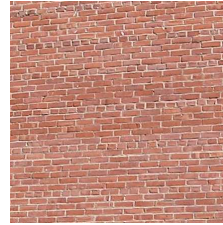
Post & Beam



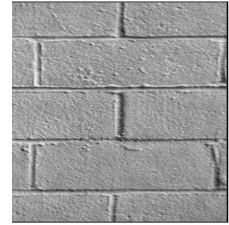
Stud Construction



Stone



Brick

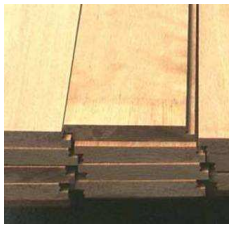


Concrete Block

Exterior Siding



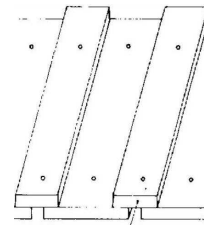
Barn Board



Shiplap



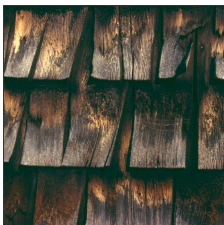
Clapboard



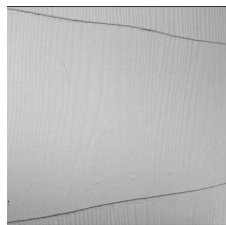
Board & Batten



Novelty



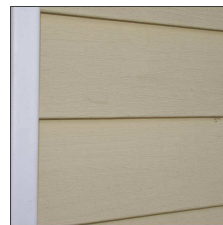
Wood Shingle



Asbestos Shingle



Sheet Metal



Aluminum/Vinyl

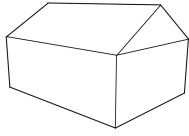


Asphalt

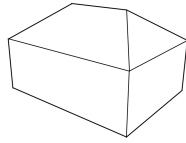


Corrugated Fiberglass

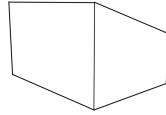
Roof Type



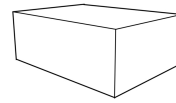
Gable



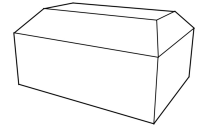
Hip



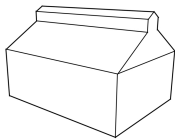
Shed



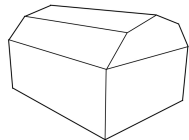
Flat



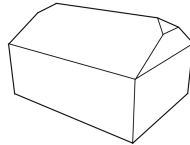
Mansard



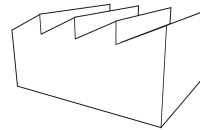
Monitor



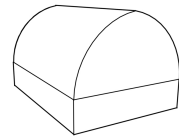
Gambrel



Jerkinhead



Sawtooth

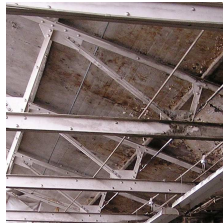


Arch

Roof Structure



Wood



Metal

Roof Covering



Slate



Wood Shingle



Asphalt Shingle



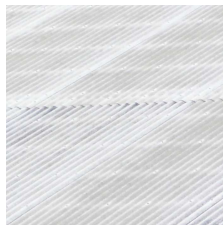
Sheet Metal



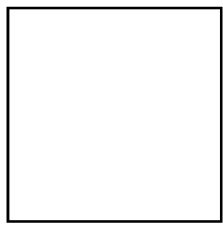
Tile



Corrugated Metal



Corrugated Fiberglass

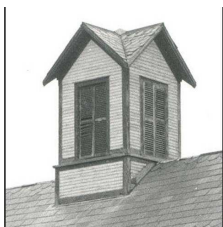


Rolled Asphalt

Additional Features & Appendages



High Drive



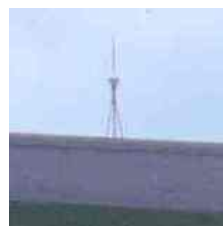
Cupola



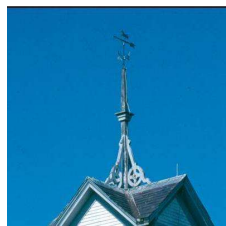
Ventilator



Dormer



Lightning Rod



Weather Vane



Transom



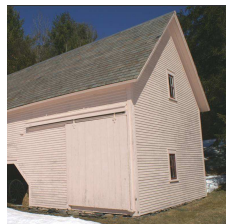
Name/Date Inscription



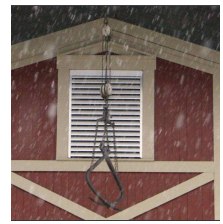
Hay Door



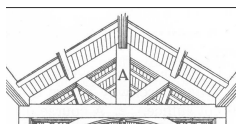
Hinged Barn Door



Sliding Barn Door



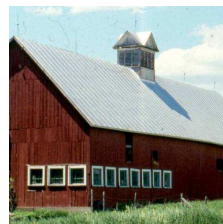
Hoist



King Post Truss



Tie Rods



Stall Windows



Stanchions

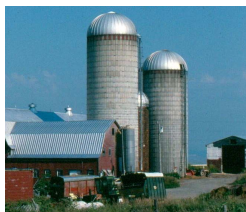


Gunstock Post—A structural framing member with a cross-section similar to above

Silo Types



Wood Silo



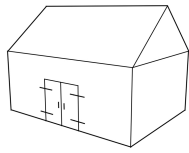
Concrete Silo



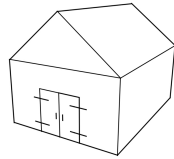
Harvestore Silo

Silos can also be made of tile or metal. Some early silos can be located in a barn's interior.

Main Entrance

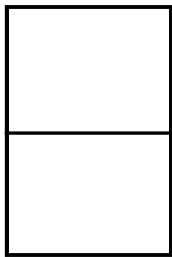


Eaves Side

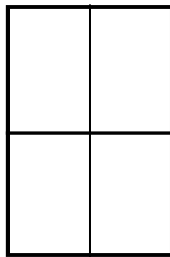


Gable Front

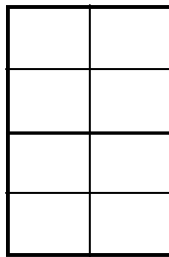
Windows (Most windows are double hung, with an upper and lower sash able to slide up or down.)



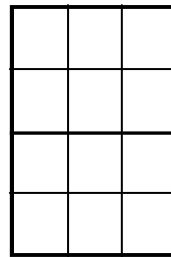
One over One
(1/1)



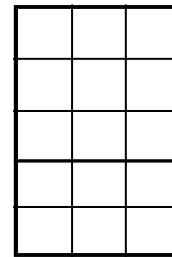
Two over Two
(2/2)



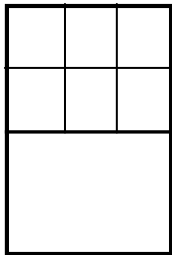
Four over Four
(4/4)



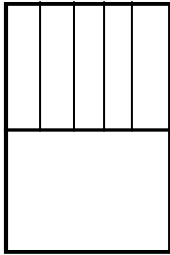
Six over Six
(6/6)



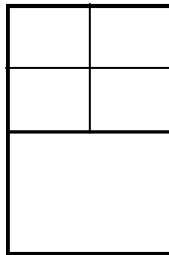
Nine over Six
(9/6)



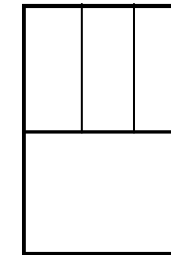
Six over One
(6/1)



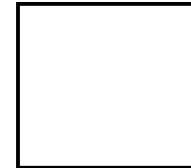
Five over One
(5/1)



Four over One
(4/1)

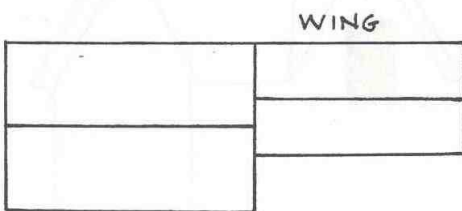


Three over One
(3/1)

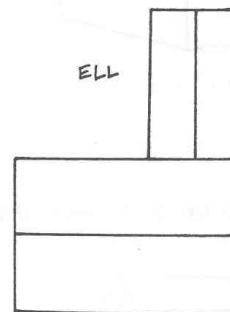


Barn Sash— A fixed non-openable window with any number of window panes.

Wing vs. Ell



Wing — A building appendage whose roofline is parallel to the roofline of the main structure.



Ell — A building appendage whose roofline is perpendicular to the roofline of the main structure.